

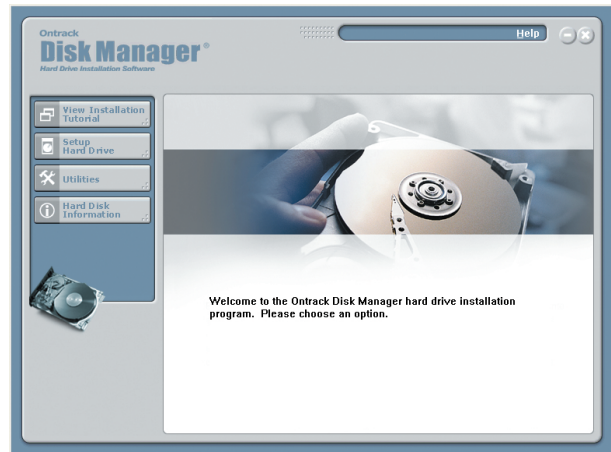
- Supports all large drives — breaks the 137 GB BIOS barrier!
- Point and click to create customized-partitions
- Easily copies data from old drive to new drive
- Easy-to-use graphical user interface
- Virtual plug and play — no need to move cables or change jumper pins
- Installation in as fast as 30 seconds!

Worry-free hard disk installation in minutes!

Remove the fear and anxiety of installing a new hard drive to your system.

Disk Manager[®] has made installing today's hard drives an easy and automated process — from physically attaching the drive, to formatting and partitioning the media. All you need to do is plug in your drive and let Disk Manager do the work!

So simple you'll install your drive correctly the first time. The exclusive Disk Manager View Installation Tutorial and graphical interface intelligently leads you through the entire process. No long technical support calls, no searching through thick, complicated manuals to find the correct jumper settings or BIOS upgrading procedures. These and other technical issues are completed for you by Disk Manager.

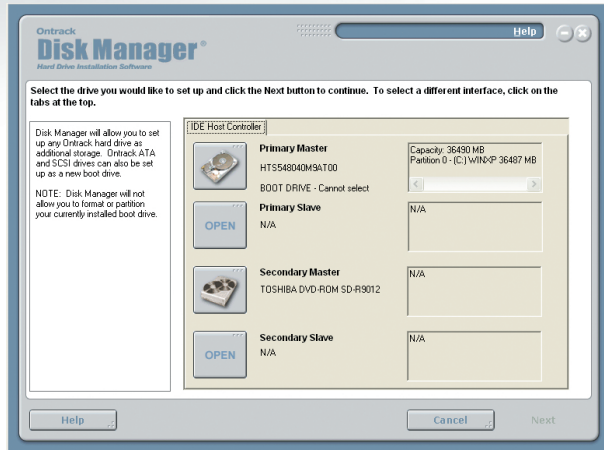


Creates an installation manual to fit your specific needs.

A Disk Manager custom installation manual compiles as you run the program. Based on information gathered from you, and gained through analyzing your system, a custom manual is created just for you according to your needs and the requirements of your system.

Intelligent programming provides value-added features.

Disk Manager will help you with both the physical and electronic installation of your hard disk drive. Our exclusive Graphical Jumper Display is an easy to use online resource that provides you with the correct jumper settings for any configuration. In addition, Disk Manager provides many helpful features to aid in your electronic installation including copying files and operating system information to your new media and automatically remapping drive letters.



Technical Features:

Install any size hard drive and access its full capacity. Disk manager overcomes the limitations of your BIOS and lets you install and fully utilize the storage space of any size drive.

Fast installation. Disk Manager will completely install your IDE/ATA or SCSI drive(s) quickly and efficiently.

Custom-made installation manual. Developed according to your needs and the requirements of your system, our custom manual provides step-by-step instructions to ensure a successful installation.

Disk Manager 5.0 System Requirements

Ontrack® Disk Manager® 5.0 is a stand-alone application that will run on the following Microsoft operating systems:

- Windows 98SE
- Windows Millennium Edition
- Windows 2000
- Windows XP Home and Professional editions

The following are the minimum system requirements for running Disk Manager:

- 233 MHz or higher Intel or compatible processor or, alternatively, the minimum requirements for the installed OS
- 64 MB of RAM or more
- Minimum video capabilities of 256 colors at 800x600 resolution

Extensive database of jumper settings with diagrams. Ensure that your drive is connected properly before you attempt electronic installation.

Maximize efficiency by creating partitions that meet your usage requirements. Simply point and click to create the partitions you need to best organize your information.

Easily move critical files to other drives. No need to reinstall software — Copy Files functionality will automatically move important files and operating systems where you prefer — to your old or new drive.

Increase storage capacity and efficiently use disk space. In FAT32 systems, you can adjust the size of your clusters to free up unused storage space.

Easily access online technical support resource for trouble-shooting. Disk Manager comes complete with comprehensive online help for every feature, every function.

Quickly diagnose problems. Data Advisor® is a simple, yet powerful diagnostic tool for assessing the condition of your computer system. Data Advisor quickly assesses the health of your hard disk drive, file structures, and computer memory by identifying problems that could cause data loss.

Copyright © 2004 Kroll Ontrack Inc. All rights reserved. All products and brand names mentioned are trademarks or registered trademarks of their respective holders.